

VIRASHA

HEIGHTS

LIFE COMES ALIVE.

4BHK Premium Duplexes

Experience living like never before,



ACTUAL PHOTOGRAPHS



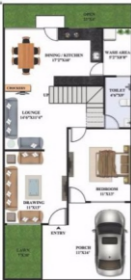
AMENITIES

Modern Club House | Swimming Pool | Indoor Games | Party Hall | Landscaped Garden
Children's Play Area | 24x7 Secured Campus with Centralize Surveillance
Power Back-up in Common Areas

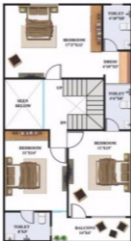
A lifestyle that's nowhere but somewhere in your thoughts



Look Forward To A Wonderful Life



GROUND FLOOR PLAN



FIRST FLOOR PLAN

SPECIFICATIONS

- **Structure:** Earthquake resistant, R.C.C. framed structure with superior quality Brick work with Plaster finish.
- **Flooring and Wall Tiling:** Vitrified tiles size 2'x2' and modern designer tile concept in bathrooms.
- **Doors and Windows:** Flush doors with wooden frame and safety locks, Superior quality S.S. finish hardware fittings, Powder coated 3 track Aluminum Windows.
- **Electrical Work:** 3-phase concealed and fire resistant electrical work.
- **Painting :** Long Lasting and weather resistant paint.
- **Plumbing & Sanitation :** Good quality Designer sanitary ware for spotless and sparkling toilets
- **Kitchen:** Granite platform and ceramic tiles dado.

Site :- E-8 Ext., Near Bawadiakala Bridge,
Bhopal - 462042 (M.P.)

BEYOND THE SALE
1ST PHASE POSSESSION DELIVERED,
2ND PHASE CONSTRUCTION IN FULL SWING.

VIRASHA
HEIGHTS
LIFE COMES ALIVE.



Kolar Castle, Chumbhatti Square, Bhopal-16
Contact : 082231-44424, 096690-02904,
096694-49295
Email : virasha_infrastructure@gmail.com
manager.marketing@virasha.com



architect, engineers and interior designers

AR, VIPIN CHASHAN
Kolar Castle, Chaus Bhatti Square, Bhopal-16
P 0755 4266719, 98243-86671
E: dimensions_bpj@yahoo.co.in