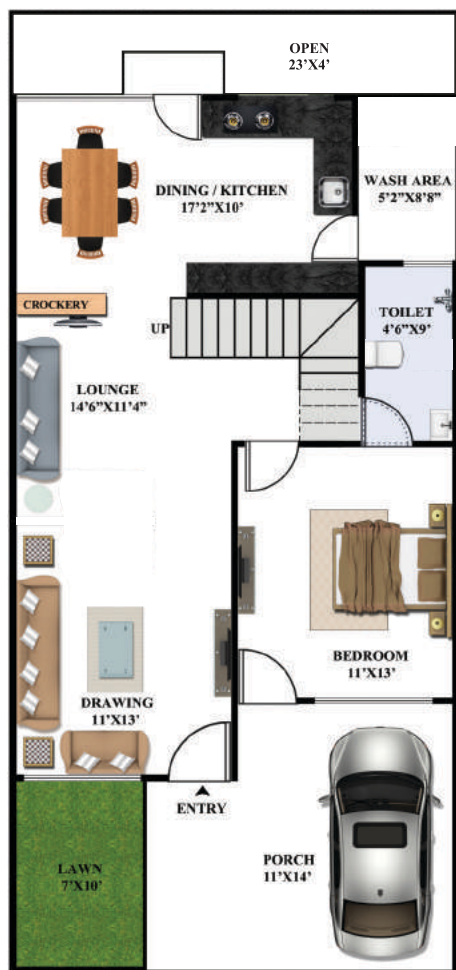




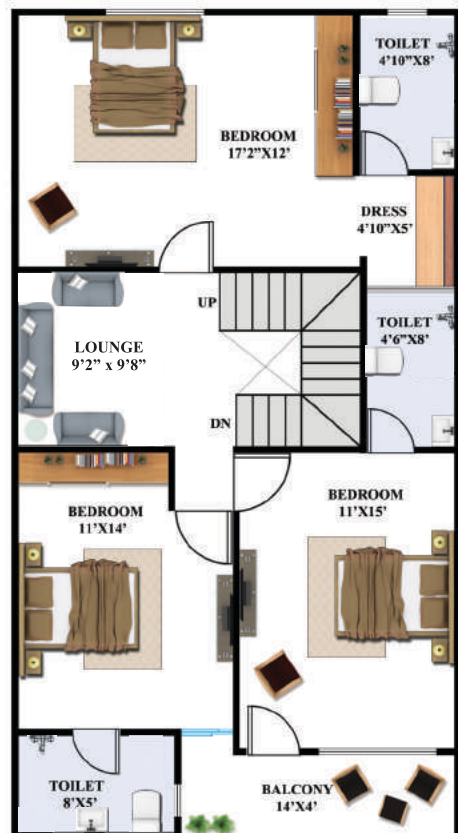
RERA REGISTRATION
No. - P-BPL-17-588

4BHK Premium Duplexes

EXCLUSIVELY AT ITS BEST WITH LIFETIME HAPPINESS



GROUND FLOOR PLAN



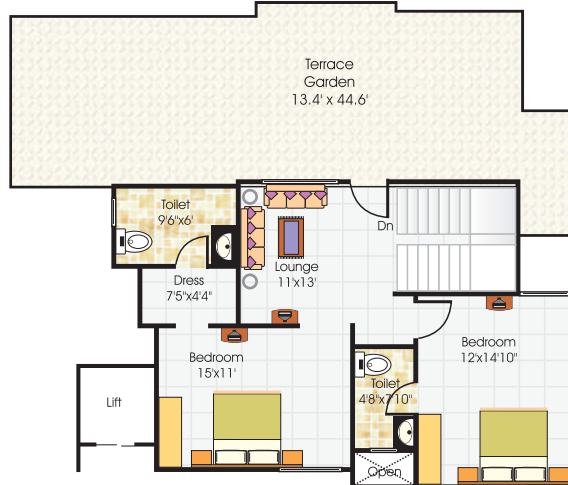
FIRST FLOOR PLAN

YOUR DREAM HOME IS NOW A REALITY

Floor Plan : 4 BHK Penthouse

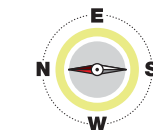


Sixth Floor Plan



Penthouse Floor plan

Floor Plan : 3 BHK Apartment



Site :- E-8 Ext., Near Bawadiakala Bridge, Bhopal - 462042 (M.P.)

DISTANCE FROM MAJOR LANDMARKS	
• Campion School	3.90 km
• Orion School	0.75 km
• Shahpura Police Station	1.50 km
• Aura Mall (Trilanga)	1.65 km
• Habibganj Railway Station	6.50 km
• 10 No. Market	5.75 km
• Ashima Mall (Hoshangabad Road)	2.00 km
• J.K. Medical College and Hospital	1.00 km
• Bansal Hospital	3.00 km



Builders and Developers :
VIRASHA INFRASTRUCTURE
Building Your Dream

Kolar Castle, Chunabhatti Square, Bhopal-16
Contact : 082239-44424, 096690-02904,
096694-49295
Email : virasha.infrastructure@gmail.com
manager.marketing@virasha.com

Architect:
Dimensions
architect, engineers and interior designers

AR.VIPIN CHAUHAN
Kolar Castle, Chuna Bhatti Square, Bhopal-16
☎ 0755 4266719, 98263-86671
E: dimensions_bpl@yahoo.co.in

Project approved by all leading banks :



www.youtube.com/watch?v=qOAFziKX07U

Note - Please bear in mind that the furniture, soft furnishings and wall-coverings shown in our brochure & show homes are not part of our standard specification.

WWW.VIRASHA.COM

RERA REGISTRATION
No. - P-BPL-17-699

OFFERING HAPPINESS
TO CELEBRATE

VIRASHA
HEIGHTS
LIFE COMES ALIVE.

3 BHK Apartments, 4 BHK Duplexes & Penthouses

Ready Possession Homes



RELAX, RELIVE IN PLEASURE

Member of
CREDAI
Confederation of Real Estate
Developers' Associations of India



WELCOME TO AN AMAZINGLY FABULOUS LIFESTYLE

Presenting Virasha Heights, a paradise residential township where all your dreams to live in a perfect apartment campus comes true. Fully loaded with amazing facilities and perched at a location seen as prime, this all exclusively planned, impeccably luxurious, lavish & secure group of apartments is bound to take living to the next level.

Get to Virasha Heights today and look forward to a wonderful, experience of living like never before.

SOOTHING VICINITY



LAVISH AMENITIES

Apartments at Virasha Heights are bound to offer you the added assurance of trust, satisfaction, comfort and convenience. Its wonderful interiors coupled with marvelous exteriors will certainly give you the feeling of a complete home at every step. New aspirations and all new hopes will undoubtedly be strengthened with this home of your dreams.

So, own a peaceful life, and get the key to happiness right away.



FEATURES

Along with blissful with nature, Virasha Heights gifts all modern day amenities for convenience, safety and comfort which make these homes extra special. Here are the few of its class apart features :

- Modern club house
- Swimming pool
- Landscaped gardens with childrens play area
- Superior development & construction
- 24 x 7 Secured campus with centralize surveillance
- Wide cemented roads
- Adequate water supply
- Power back up for lifts & common areas
- Modern and state of the art elevation

UPGRADE YOUR DESIRE TO THE PLACE OF YOUR DREAMS

ACTUAL PHOTOGRAPHS



EXPERIENCE LIFE WITH COMFORT & LEISURE

SPECIFICATIONS

Structure: Safe and Sound, Quality controlled RCC framed structure with best material components, Earthquake resistant design.

Plaster Work: Double coat plaster on external walls, Single coat plaster in inside area.

Flooring and Wall Tiling: Vitrified tiles size 2'x2' flooring having greater strength in entire area. Easily maintainable and modern designer tile concept upto 7' height in bathrooms.

Doors and Windows: Laminated main door with wooden frame and safety locks, Internal doors with wooden frame and flush shutter doors, Superior quality S.S. finish hardware fittings, Powder coated 3 track Aluminium Windows.

Electrical Work: 3-Phase concealed and fire resistant right gauge wiring of "ISI" Copper Wire, Distribution board with "MCB". "ISI" mark modular electrical accessories, Ample electrical points in all areas, Landline

phone conduit, Cable TV wiring conduit, Separate line for inverter connection, Air conditioner power point, Air conditioner copper pipe line (optional).

Painting: Long Lasting and weather resistant acrylic paint of standard make to all external walls, All internal walls with white cement based putty finish with OBD.

Plumbing & Sanitation: Good quality Designer sanitary ware for spotless and sparkling toilets, High quality plumbing fixtures, Corrosion free and leak proof CPVC/UPVC pipe and fitting (ISI mark), SWR drainage system for easy maintenance.

Kitchen: Black Granite platform with ceramic tiles dado, upto 2' height, Stainless Steel sink in Kitchen, Aquaguard point, Connection for washing machine in wash area.

Lobby and Staircase: All lobby staircase and corridors in soothing Granite stone & tiling work with S.S. railing.

DISCOVER THE TRUE LIFESTYLE WITH SPACIOUSNESS